

PRODUCT OVERVIEW

ECHO NODE AIO



Seamless 4G/5G Integration for All-in-One Connectivity

The ECHO NODE AIO combines both private cellular access and high-speed backhaul in a single compact unit. With integrated 4G or 5G radio, this device supports rapid deployment of private wireless networks, ideal for operators looking to provide both access and backhaul without the need for extensive infrastructure.

Effortless Network Expansion Anywhere

Built for effortless deployment, the ECHO NODE AIO requires only power and internet access to establish a private wireless network nearly anywhere. This solution delivers high-speed connectivity to diverse environments, from indoor warehouses and factories to outdoor facilities like mines or industrial plants. The ECHO NODE AIO is ideal for operation in remote or urban settings.

Unified Access and Backhaul Solution

The preconfigured, all-in-one design consolidates private LTE/5G and backhaul into a single platform, enabling operators to manage network access and high-capacity backhaul seamlessly. This integration supports streamlined deployment, making it easy for operators to deliver robust, scalable private networks for industrial, enterprise, and public safety applications.

Rapid Private Network Rollouts

With 4G/5G access and 60GHz backhaul, the ECHO NODE AIO empowers operators to quickly establish high-speed networks in areas without existing infrastructure. Ideal for industries that require fast, reliable connectivity in hard-to-reach locations, the ECHO NODE AIO enables rapid deployment of private networks with minimal setup.



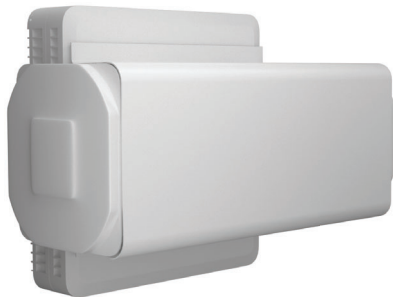
www.batswireless.com

8431 Georgetown Rd. #600
Indianapolis, Indiana 46268

Toll Free +1-888-955-8228
Sales +1-317-500-4507
Support +1-317-500-4506
Email info@batswireless.com

PRODUCT SPECIFICATIONS

ECHO NODE AIO



Specifications

ECHO NODE AIO - All-In-One, Backhaul-Integrated 4G/5G Access Point

DIMENSIONS	15.7" x 9.1" / 400mm x 230mm
WEIGHT	7.3 lbs / 3.3 kg
FREQUENCY	Access Point: B48 (3550 MHz– 3700 MHz)** Backhaul: 57-71 GHz
THROUGHPUT	Access Point: 290 Mbps (CA Max Per Subscriber)** Backhaul: 2.3 Gbps
ELECTRONIC ALIGNMENT (BACKHAUL)	90° ±45° (AZIMUTH) 50° ±25° (ELEVATION)
TEMPERATURE	23°F to 113°F / -5°C to 45°C**
POWER	48VDC (PoE or DC Cable)
CONFIGURATION	Web Interface

** Access Point Dependent

